

# **TRANSPORTATION INDUSTRY PROVIDING TECHNICAL SAFETY & PRODUCTIVITY SOLUTIONS**



Honeywell



# TRANSPORT YOUR BUSINESS TO A BETTER PLACE: LEADING THE RACE

Honeywell is committed to providing the right product for your application. Whether you need a standard product or a highly customized solution, our sales and engineering teams have decades of experience in the Transportation industry.

We understand your applications and work diligently to ensure we provide a solution that optimally meets your technical and financial needs.

Our combination of a broad product portfolio, deep technical capabilities and extensive application experience culminates into a powerful ability to meet your design needs.



## TABLE OF CONTENTS

TARS-IMU .....	3
Industrial & Military Toggles.....	4
Limit Switches .....	5
Basic Switches .....	6
Pressure Switches and Sensors.....	7
Position Sensors .....	8
Magnetic Sensors.....	9
Air Quality Monitoring .....	10
Proximity Sensors.....	10

# TRANSPORTATION ATTITUDE REFERENCE SENSORS (TARS-IMU)

The Transportation Attitude Reference System or TARS-IMU is a packaged sensor array designed to report vehicle angular rate, acceleration and attitude data for demanding applications in industries such as heavy-duty and off-highway transportation.

## FEATURES

- Reports angular rate, acceleration and inclination
- Ruggedized PB8 thermoplastic housing
- IP67 and IP69K certified
- Advanced filtering of raw sensor data
- Optional metal guard for added protection
- Supports 5 V and 9 V to 36 V vehicle power systems
- Operating temperature of -40°C to 85°C [-40°F to 185°F]
- Small form factor



## BENEFITS

- Enables semi-autonomous vehicle operation and enhanced efficiency and productivity
- Suitable for the most demanding application and environmental conditions
- Improved positioning accuracy
- Minimizes unwanted noise and vibrations



## APPLICATIONS

- Safety, productivity and comfort functions on agricultural, mining, material handling, platform lift and construction equipment
- Cab/equipment leveling
- Tip avoidance/stability control
- Operator-assisted control

**HONEYWELL OFFERS A BROAD OFFERING OF POSITION SENSORS:**

View our offering by [clicking here](#).

# INDUSTRIAL-GRADE SEALED TOGGLE SWITCHES NT SERIES



## FEATURES

- NEMA 3, 3R, 4, 13 and IP67/68
- UL recognized; CSA, CE, UKCA certified
- Three popular styles of termination and many configuration options
- Larger standard metal or plastic levers
- Optional “Easy Start” threaded bushing

## BENEFITS

- Environmental sealing for demanding applications
- Qualified for global use
- Configurable to your specific needs
- Well suited for gloved-hand operation.
- Quick alignment of the mounting nut to minimize any cross threading
- Enables more compact designs

# MILITARY-GRADE SEALED TOGGLE SWITCHES TL SERIES



## FEATURES

- MIL-DTL-3950 qualified; UL recognized; CSA, CE, UKCA certified
- 1-, 2- and 4-pole, 2- and 3-position, maintained and momentary toggle action
- Optional locking levers for critical applications
- Step-design case
- Choice of silver alloy or gold-plated contacts

## BENEFITS

- Designed to withstand the most demanding indoor and outdoor applications
- Qualified for global use
- Configurable to your specific needs
- Added space between terminals to prevent shorting



**HONEYWELL OFFERS AN EXTENSIVE RANGE OF TOGGLE SWITCHES INCLUDING TS, MT, NT, TL, TW, AT AND ET SERIES:**

View our offering by [clicking here](#).

# MICRO SWITCH LIMIT SWITCHES

Available with a variety of actuators, electrical specifications, terminations, circuitries and sealing ratings, Honeywell MICRO SWITCH limit switches offer superior flexibility and performance. These precision snap-action switches — sealed in rugged housings — are used to detect presence or absence in areas where physical contact is allowed.



## NGC Series FEATURES

- SPDT or DPDT configurable circuitry
- Snap-action, positive-break contacts
- IEC 60947-5-1, IEC 61373, EN45545-2
- NEMA 1, 4, 12, 13; IP67 sealing
- Mechanical life up to 5 million operations



## 14CE Series FEATURES

- IP65/66/67/68 environmental sealing
- Pre-leaded or M12 four-pin connector
- 25 mm mounting centers
- 10 million actuation cycles



## GLC Series FEATURES

- EN 50047 footprint
- EN 45545-2 emission standard
- Sealed to IP66; NEMA/UL 1, 4, 12 and 13
- Mechanical life up to 10 million operations
- Positive opening EN/IEC 60947-5-1-3



## HDLS Series FEATURES

- IP65/66/67 environmental sealing
- Sintered bronze bearing on 303 stainless steel operating shaft for enhanced mechanical life up to 50 million actuation cycles
- Corrosion-resistant zinc head and body are phosphate treated and epoxy coated

**HONEYWELL OFFERS A WIDE RANGE OF LIMIT SWITCHES INCLUDING NGC, 14CE, GLC AND HDLS SERIES:**

View our offering by [clicking here](#).

# MICRO SWITCH BASIC SWITCHES

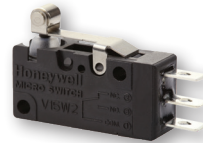
With decades of engineering excellence in the design of snap action switches, Honeywell offers a range of products to meet market demands. No matter if you require a simple or precision on/off detection, or an electromechanical interface for pressure monitoring or to support a manual operator interface, there are options to serve numerous applications.



## Miniature V15 Series

### FEATURES

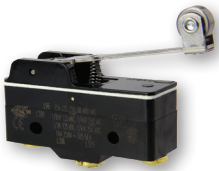
- Max 26 A Load
- Up to 1 million mechanical cycles
- Highly configurable



## Miniature V15W Series

### FEATURES

- Max 10 A load
- Up to 1 million mechanical cycles
- IP67 sealed
- Pre-cabled or terminal options



## Large Basic BZ/BA/BM/BE Series

### FEATURES

- Max 25 A load
- Up to 20 million mechanical cycles
- MIL-PRF-8805 on selected listings



## Subminiature HD1 Series

### FEATURES

- Max 0.1 A load
- Up to 300,000 mechanical cycles
- IP67 sealed

**HONEYWELL OFFERS AN EXTENSIVE RANGE OF BASIC SWITCHES INCLUDING BZ, V15W, V15 AND HD1 SERIES:**

[View our offering by clicking here.](#)

# PRESSURE SENSORS AND SWITCHES



## MIP Series

The MIP Series offers a heavy duty, media-isolated pressure transducer in a compact, stainless steel construction for use with a wide range of media including aggressive fluids and water. The MIP Series provides a cost-competitive solution for wide-ranging potential applications in tough environments.

- Pressure range 0 psi to 175 psi
- 1 mS response time
- High freeze/thaw resistance
- Life-time rating: 10 million cycles



## MLH Series

MLH heavy duty pressure sensors are utilised in a wide range of applications and industries where proven reliability and durability is a top priority. Extensive media compatibility combined with greater than one million configurations makes MLH the ideal pressure sensing solution for demanding applications.

- Pressure ranges up to 8,000 psi (550 bar)
- Absolute, gage and sealed-gage
- Wide selection of port/connector types
- High-end stainless steel (corrosion resistance)

## HONEYWELL OFFERS A LARGE PORTFOLIO OF PRESSURE SENSORS:

[View our offering by clicking here.](#)

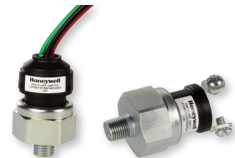
## 5000 Series



Honeywell's 5000 Series pressure switch is specifically designed to stand up to extended duty applications. This switch is factory set but capable of field adjustment. It features a Kapton diaphragm for compatibility with a wide variety of fluids, and various terminations including a Metri-Pack connector.

- Brass or stainless steel base
- 75 psi to 150 psi
- Four set-point ranges
- 1 million mechanical cycles

## LE Series



Pressure switches form the last line of defence in many critical applications, protecting people, equipment and the environment. Extensive configurable options with high proof/burst pressure ratings make Honeywell pressure switches the ideal solution for demanding applications.

- 3.5 psi to 10 psi ( $\pm 1$  psi)
- >10 psi to 50 psi ( $\pm 3$  psi)
- >50 psi to 100 psi ( $\pm 7$  psi)
- >100 psi to 150 psi ( $\pm 10$  psi)

## HONEYWELL OFFERS AN EXTENSIVE RANGE OF PRESSURE SWITCHES:

[View our offering by clicking here.](#)

# SPEED & POSITION SENSING



## SPEED & DIRECTION SENSORS

SNG-Q, SNDH-T, SNG-S and SNDH-H Series sensors are utilised to monitor and control the speed and direction of rotating ferrous gears and tone wheels. Magnetic speed sensors contain no moving parts and provide superior performance and reliability.

- Speed detection up to 20 kHz and some models with zero speed detection
- Wide selection of connector types
- Environmental sealing: IP69K
- Life-time rating: 2 million cycles



## SMART POSITION SENSORS

**SMART** position sensors are durable, adaptable and lightweight, enabling enhanced accuracy in motion control and improving operational efficiency and safety. The non-contact design facilitates ease of integration in the application, promoting performance even in the harshest environments.

- Non-contact design eliminates wear & tear
- Easy to install, reducing set-up costs
- Life-time rating: 35 million cycles
- Environmental sealing: IP67, IP69K
- **NEW!** SMART Arc 145° CAN-enabled position sensor

## ROTARY POSITION SENSORS



### RTP Series

Takes non-contact sensing to the next level by separating the magnet from the sensor body. The absence of the actuator shaft removes the wear and tear on the bearings caused by radial forces.

- Life-time rating: Infinite
- Operating range: 50° to 360°
- Supply voltage: 5 Vdc to 30 Vdc
- Environmental sealing: IP67 & IP69K



### RTY Series

These shaft activated products are available in two versions: an integral shaft with or without a lever.

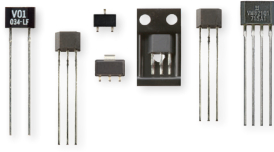
- Life-time rating: 35 million cycles
- Operating range: 50° to 360°
- Supply voltage: 5 Vdc to 30 Vdc
- Environmental sealing: IP67 & IP69K

**HONEYWELL OFFERS A WIDE RANGE OF POSITION SENSORS:**

[View our offering by clicking here.](#)



# MAGNETIC SENSORS HALL AND AMR SENSOR ICs



## VF401

The VF401 is a high performance, digital, 2-wire, AMR (anisotropic magnetoresistive) sensor in a miniature, flat, TO-92-style, plastic package with a current output, designed for sensing fine pitch ring magnets. Its robust design operates from -40 °C to 150 °C [-40 °F to 302 °F] and can withstand short durations up to 175 °C [347 °F], allowing use in potential applications with extreme temperature requirements.

## VF526DT

The VF526DT bipolar latch, dual Hall-effect digital position sensor has two distinct Hall sensing elements precisely located 1,4 mm [0.055 in] apart on a single integrated circuit chip. The elements are encapsulated in a thermoset molding material.

- Temperature-compensated magnetics and ultra-low offset drift with temperature
- Single, miniature 4-pin SOT-89B plastic package supplied on tape and reel for automated assembly
- Wide operating voltage range of 3.4 Vdc to 24 Vdc

## VG481V1

The VG481V1 back biased Hall-effect speed sensor IC contains a dual peak detecting circuit that is coupled with a Hall-effect element to detect the speed of a ferrous gear tooth target wheel.

- Zero-speed capable
- Low cost and easy to use
- 4 V to 24 V supply voltage range

## VF360ST, VS360NT, VF460S

These high sensitivity latching digital Hall-Effect sensor ICs are small, sensitive and versatile devices that are operated by the magnetic field from a permanent magnet or an electromagnet.

- Qualified to the AEC-Q100 standard
- Fast response time (1.5 μs)
- Repeatable magnetics (no jitter)

## VF495A-SP

The VF495A-SP Series are small, versatile, linear Hall-effect devices that are operated by the magnetic field from a permanent magnet or an electromagnet.

- Quad-Hall IC design
- Responds to positive or negative Gauss

## VM821Q1

The VM821Q1 AMR 4-pin quadrature sensor IC is designed to detect the speed and direction and position of a ring magnet encoder target.

- Integrated quadrature sensor IC
- Pole size independent operation
- 4-pin quadrature, open collector outputs

**HONEYWELL OFFERS A LARGE PORTFOLIO OF MAGNETIC SENSORS:**

[View our offering by clicking here.](#)

## AIR QUALITY MONITORING



### HPM Series

Enables the ability to more accurately and cost competitively monitor or control environmental particulate.

- Industry-leading long life of 10 years of continuous use
- Proven EMC performance enables the ability to perform more accurately in a variety of tough industrial environments

**HONEYWELL OFFERS A NUMBER OF PARTICULATE SENSORS:**

[View our offering by clicking here.](#)

## PROXIMITY SWITCHES



### GAPS Series

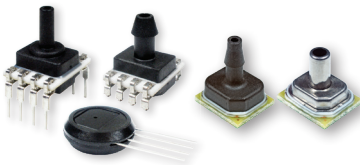
Environmentally rugged, fully hermetic packages provide long-term reliability in very harsh environments by eliminating the potential for contamination of the sensor from the application environment.

- Integral Health Monitoring Capability: Optional third output state to indicate the health of the sensor (whether it is healthy or failed).

**HONEYWELL OFFERS A WIDE VARIETY OF PROXIMITY SENSORS:**

[View our offering by clicking here.](#)

## BOARD-MOUNT PRESSURE



### HSC, SSC, ABP2 Series

Utilises a specialized piezoresistive, micro-machined, sensing element which allows part interchangeability and enhanced performance, reliability and accuracy.

**HONEYWELL OFFERS A RANGE OF BOARD-MOUNT SENSORS:**

[View our offering by clicking here.](#)

## BOARD-MOUNT FORCE



### FMA Series

Measures the addition or backup of force, meaning the resistance of silicon-implanted piezoresistors will increase when flexed under applied force.

**HONEYWELL OFFERS A WIDE RANGE OF FORCE SENSORS:**

[View our offering by clicking here.](#)

# SENSOR AND SWITCH APPLICATIONS



PRODUCT	APPLICATIONS
Hall-effect sensor IC	Wheel speed, power seat motor Cam/crankshaft
Inertial measurement unit (IMU)	Vehicle angular rate, acceleration and inclination
Key switch Smart key	On/off Operator-specific functionality
Limit and basic switch	Back-up alarm Machine and cab position Jib, outrigger position Brake switch
Current sensor	Battery management systems and charging infrastructure
Board-mount products	Filter clogging Fuel level detection
Particle sensor	Environmental particle detection
Pressure sensor	Hydraulic/brake system Fuel level Outrigger load

PRODUCT	APPLICATIONS
Pressure switch	Hydraulic/engine oil sensing Brake monitoring Airflow monitoring
Rotary Hall-effect position sensor Linear Hall-effect sensor	Jack position Power steering control Stability control Throttle position
Rotary position sensor SMART position sensor	Boom and steering angle sensing Reach arm & steering position Gear position Throttle by wire Vehicle and load position
Speed sensor Speed & direction sensor	Wheel speed Hydraulic pump speed Cam/crankshaft speed Turbo speed RPM/MPH/speedometer Forward/reverse sensing
Thermostat	Fan control Fire suppression sensing
Toggle and rocker switch	Manual operator switch

# SERVING THE TRANSPORTATION INDUSTRY



**Heavy Duty On and Off Road**



**Agricultural**



**Material Handling Equipment**



**Mining and Construction**



**Power Generation**



**Rail**



**Aerial Lifts**



**Electrification**



**Cranes**

## WARRANTY/REMEDY

Honeywell warrants goods of its manufacture as being free of defective materials and faulty workmanship during the applicable warranty period. Honeywell's standard product warranty applies unless agreed to otherwise by Honeywell in writing; please refer to your order acknowledgment or consult your local sales office for specific warranty details. If warranted goods are returned to Honeywell during the period of coverage, Honeywell will repair or replace, at its option, without charge those items that Honeywell, in its sole discretion, finds defective. **The foregoing is buyer's sole remedy and is in lieu of all other warranties, expressed or implied, including those of merchantability and fitness for a particular purpose.** In no event shall Honeywell be liable for consequential, special, or indirect damages. While Honeywell may provide application assistance personally, through our literature and the Honeywell web site, it is buyer's sole responsibility to determine the suitability of the product in the application. Specifications may change without notice. The information we supply is believed to be accurate and reliable as of this writing. However, Honeywell assumes no responsibility for its use.

## FOR MORE INFORMATION

Honeywell Advanced Sensing Technologies services its customers through a worldwide network of sales offices and distributors. For application assistance, current specifications, pricing or the nearest Authorized Distributor, visit [our website](#) or call:

USA/Canada	+1 302 613 4491
Latin America	+1 305 805 8188
Europe	+44 1344 238258
Japan	+81 (0) 3-6730-7152
Singapore	+65 6355 2828
Greater China	+86 4006396841

**Honeywell Advanced Sensing Technologies**  
830 East Arapaho Road  
Richardson, TX 75081  
[sps.honeywell.com/ast](#)

All rights reserved. Honeywell and its product names are among the trademarks and/or servicemarks owned by Honeywell International Inc., or its subsidiaries. All other trademarks are property of their respective owners.

009625-5-EN | 5 | 03/22  
© 2022 Honeywell International Inc.

## POWELL ELECTRONICS

For over 75 years, Powell Electronics has been a premier industry resource for all electronic components and value-add services. We are your solutions partner for high reliability, harsh environment connector and IoT design, manufacturing, and supply chain. Our global reach provides unique expertise and solutions for major industries including Military & Aerospace, Space, Robotics, Agriculture, Test & Measurement, Medical, Rail & Mass Transit, and more.



[www.powell.com](http://www.powell.com)



800-235-7880



[honeywellinfo@powell.com](mailto:honeywellinfo@powell.com)

**Honeywell**