



BT 3500 Battery-Hydraulic Hand Tool

*More than a **ton of portable power** in your hand.*

BT 3500 Kit

The BT 3500 Battery-Hydraulic Hand Tool Kit is designed to provide the ultimate in flexibility, modularity, and powered efficiency in a light weight, ergonomic, powerful crimp unit powered by a superior Lithium-ion Battery.

The BT 3500's flexibility begins with the many user options for the power unit. It can be used with two shoulder strap options (including a 4-point harness or a single shoulder strap) or a belt option, or by using the shoulder strap on the BT case, or used as a portable bench top termination device positioned in the tool case. These six combinations allow you to tailor portable, powered crimping to your manufacturing needs.

By using the BT carrying case, multiple storage pockets permit a convenient location for terminals, wire cutters, wire strippers, spare batteries, the battery charger, and any other items an operator might require.

The BT 3500 modularity follows the Tyco Electronics powered hand tool lineage, through compatibility with all SDE dies and CERTI-CRIMP II heads, utilizing the appropriate adapters.

Fast Facts

More than a ton of power in your hand.

- Highly Portable
- Lightweight
- Ergonomic
- Compatible with SDE dies and CERTI-CRIMP II heads
 - SDE C-Head (Shoulder-Type SDE Dies)
 - SDE Closed Head, SDE Dies
 - CERTI-CRIMP II
- New 'quick take-up' feature
- Approximately 250 crimps per charge
- Generates up to 3500lbs of crimp force.

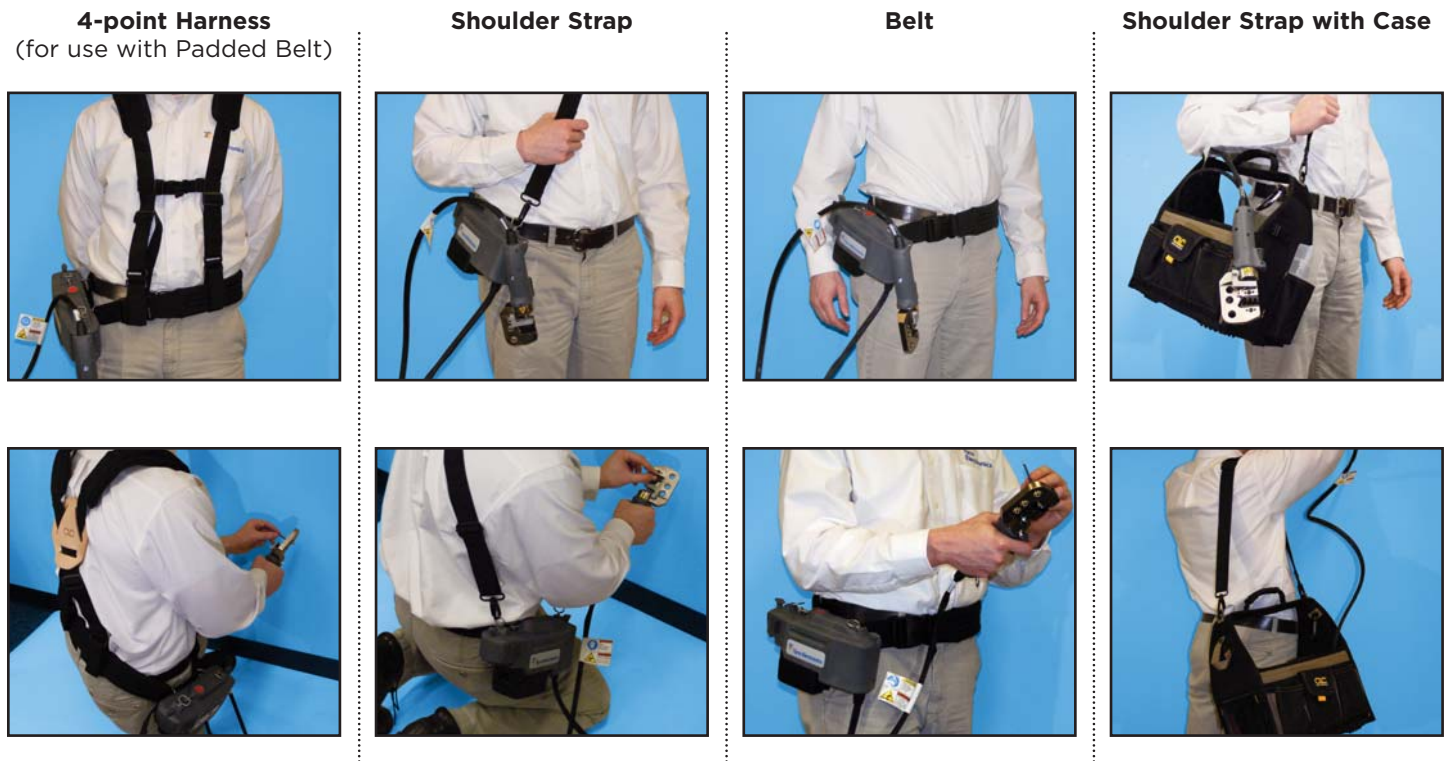
Part Number:

2031400-x

Customer Manual

409-10095

Options



Need More Information?

For information about tooling, call 888-777-5917 or 717-810-2080 or e-mail toolingsales@tycoelectronics.com.

Catalog 1773381-5
Revised 04-2010

For drawings or technical data, contact your Tyco Electronics sales engineer or call the Technical Support Center: 1-800-522-6752. Dimensions are in millimeters unless specified otherwise. Values in brackets are English equivalents unless specified otherwise. Specifications subject to change. Consult Tyco Electronics for latest specifications.



BT 3500 with the NEW “quick take-up” terminal retention feature

Amazing performance & easy handling

First, check out the new “quick take-up”, terminal retention feature. A spring loaded terminal grip, allows you to properly locate the terminal, and before the final crimp, concentrate on the proper insertion of the wire.

The BT 3500 generates 3500 lbs of crimp force through a hand-held crimp tool weighing approx 0.6 kg [1.4 lb]. Connected through an electro-hydraulic umbilical to a 2.0 kg [4.3 lb] power pack with a significantly improved, ram retract feature.



BT 3500 Case with multiple storage pockets



Pressure Release Button

The pressure release button feature provides advantages for all application situations. Some applications require the capability to stop the crimp process and retract the ram. Other applications may warrant supervisory consent to reset the tool, after a ram retract situation. The new BT 3500 Battery-Hydraulic Tool offers solutions to both situations, with the turn of a threaded pin.



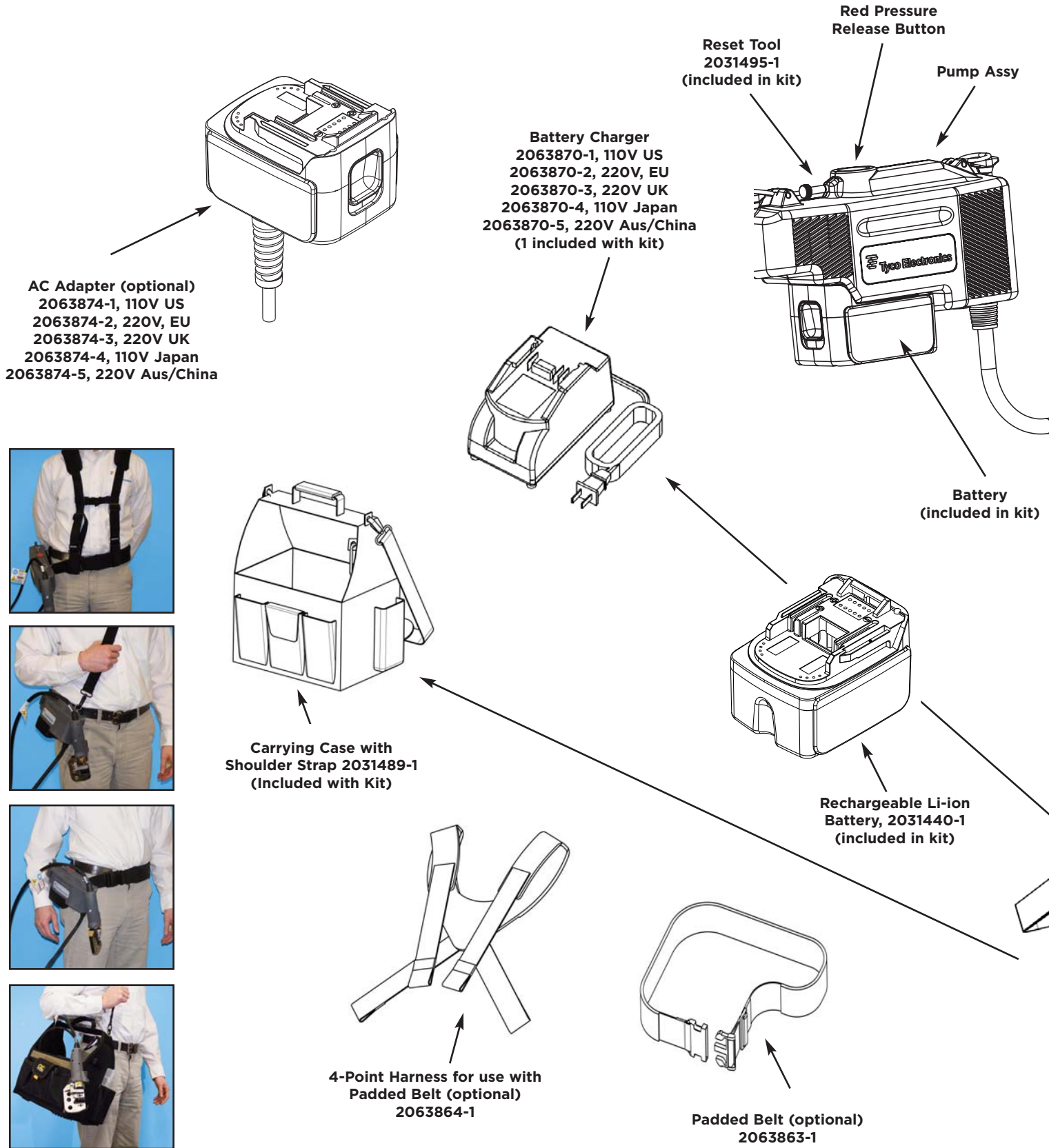
- **Red Pressure Release Button**
- **Knurled Reset Tool is specially threaded and removable**

Need More Information?

For information about tooling, call 888-777-5917 or 717-810-2080 or e-mail toolingsales@tycoelectronics.com.

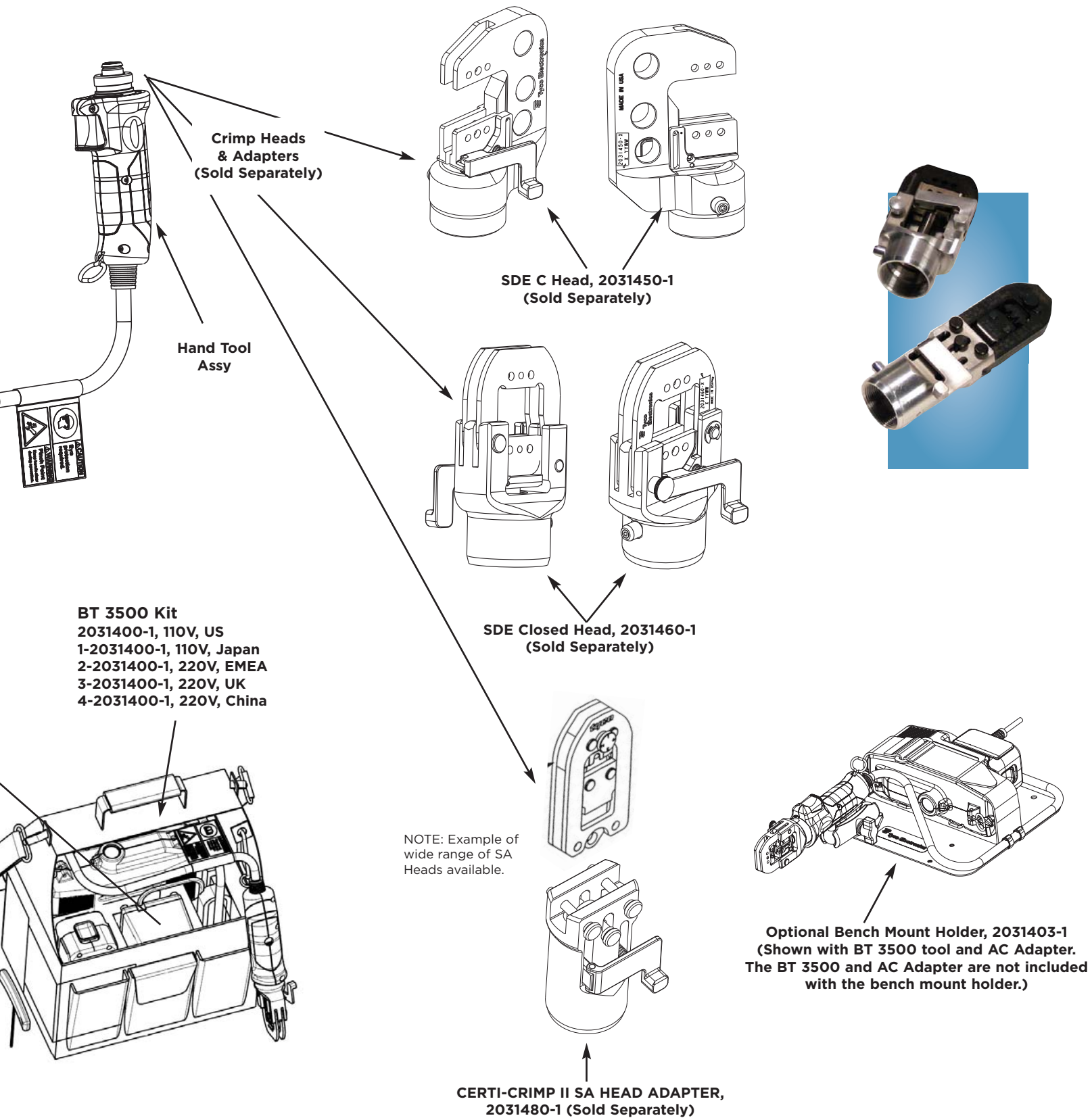
Catalog 1773381-5
Revised 04-2010

For drawings or technical data, contact your Tyco Electronics sales engineer or call the Technical Support Center: 1-800-522-6752. Dimensions are in millimeters unless specified otherwise. Values in brackets are English equivalents unless specified otherwise. Specifications subject to change. Consult Tyco Electronics for latest specifications.



Need More Information?

For information about tooling, call 888-777-5917 or 717-810-2080; email: toolingsales@tycoelectronics.com.



Need More Information?

For information about tooling, call 888-777-5917 or 717-810-2080; email: toolingsales@tycoelectronics.com.



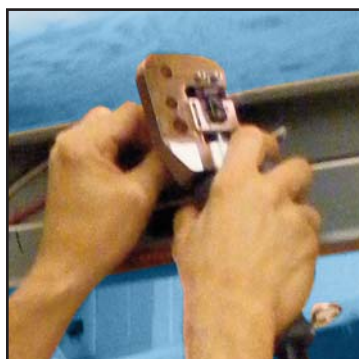
BT 3500 Battery Tool Kit Accessories

Part Number	Description	Included in Kit
2031450-1	C-Head Assembly, Shoulder-Type SDE dies	N
2031460-1	Closed Head Assembly, Pin and Shoulder-Type SDE Dies	N
2031480-1	CERTI-CRIMP Adapter Assembly	N
2031440-1	Li-ion Battery	Y
2063870-1	Charger, 110V 60 Hz US	Y*
2063870-2	Charger, 220V 50 Hz EMEA	Y*
2063870-3	Charger, 220V 50 Hz UK	Y*
2063870-4	Charger, 110V 50Hz Japan	Y*
2063870-5	Charger, 220V 50 Hz China/Aus	Y*
2063874-1	AC Adapter, 110V 60 Hz US	N
2063874-2	AC Adapter, 220V 50 Hz EMEA	N
2063874-3	AC Adapter, 220V 50 Hz UK	N
2063874-4	AC Adapter, 110V 50 Hz Japan	N
2063874-5	AC Adapter, 220V 50 Hz China/Aus	N
2031403-1	Bench Mount Assembly	N
2063864-1	4-Point Harness (for use with Padded Belt)	N
2063863-1	Padded Belt	N
2031489-1	Carrying Case with Shoulder Strap	Y
2031495-1	Reset Tool	Y

**One charger with the appropriate electrical specifications is included with each kit.*

Need More Information?

For information about tooling, call 888-777-5917 or 717-810-2080; email: toolingsales@tycoelectronics.com.



Specifications

Common Terminal Capabilities

Terminal Style	Max. Wire Size
PIDG (RBY)	10 AWG
PLASTI-GRIP (RBY)	10 AWG
SOLISTRAND	10 AWG
Open-Barrel	Most up to 14 AWG
Coaxial	Several Options

Crimping Capacities

Crimping Force	15.6 kN [3500 lb] (maximum)
Crimping Time	4.5 seconds (approximately)
Crimps per Charge	250 (approximately)

Crimping Tool

Length*	240mm [9.4"]
Width*	59mm [2.3"]
Depth*	48mm [1.9"]
Weight*	0.6kg [1.4 lb]

Power Pack *(with Li-ion Battery installed)*

Length	248mm [9.8"]
Width	80mm [3.1"]
Depth	142mm [5.6"]
Weight	2.0kg [4.3 lb]
Sound Level	72 dBA
Hydraulic Oil	Petro-Canada Hydrex MV Arctic 15
Li-ion Battery Voltage	10.8 Vdc
Charging Time	25 minutes (approximately)

BT 3500 Battery-Hydraulic Hand Tool Kit Part Numbers

2031400-1	110v US
1-2031400-1	110v Japan
2-2031400-1	220v EMEA
3-2031400-1	220v UK
4-2031400-1	220v China

*Depends on the specific crimp tooling head installed.

Need More Information?

For information about tooling, call 888-777-5917 or 717-810-2080; email: toolingsales@tycoelectronics.com.

tooling.tycoelectronics.com
tooling.tycoelectronics.com/europe

Catalog **1773381-5** / 04-10 / GATD

© 2010 Tyco Electronics Corp. All Rights Reserved.

CERTI-CRIMP, The TE Logo and Tyco Electronics are trademarks.

Tyco Electronics Corporation, Harrisburg, PA 17105, Phone: 888-777-5917 or 717-810-2080;
email: toolingsales@tycoelectronics.com

Disclaimer

While Tyco Electronics has made every reasonable effort to ensure the accuracy of the information in this catalog, Tyco Electronics does not guarantee that it is error-free, nor does Tyco Electronics make any other representation, warranty or guarantee that the information is accurate, correct, reliable or current.

Tyco Electronics reserves the right to make any adjustments to the information contained herein at any time without notice. Tyco Electronics expressly disclaims all implied warranties regarding the information contained herein, including, but not limited to, any implied warranties of merchantability or fitness for a particular purpose.

The dimensions in this catalog are for reference purposes only and are subject to change without notice. Specifications are subject to change without notice. Consult Tyco Electronics for the latest dimensions and design specifications.

