

5

4

3

2

1

**PRODUCTION  
RELEASE**

NOTE:  
THIS DRAWING INCORPORATES  
THIRD ANGLE PROJECTION.  
INTERPRET IAW ANSI Y14.5-1992

REVISIONS

LTR	DESCRIPTION	DATE	APPROVED
D	LENGTH REDUCED TO .43 FROM .58 MAX.	03/29/2005	D. SAUNDERS

**SPECIFICATIONS**

FREQ. RANGE: DC TO 18 GHz  
 VSWR(MAX.): SEE TABLE 1  
 IMPEDANCE (BASE): 50 OHMS  
 POWER(AVG): 1 WATT AVG AT +25°C  
 DERATED LINEARLY TO 10% AT +125°C  
 <500 WATTS, 5 μ SEC PW.  
 FOR OTHER PW CONTACT XMA TO VERIFY  
 DERATED LINEARLY TO 10% AT +125°C

TEMP. RANGE:  
 (OPER): -55°C TO +125°C  
 (STORAGE): -65°C TO +125°C  
 WEIGHT(MAX): <0.15 oz (<3.5 g)

MATERIALS AND FINSHES ARE PER NOTES BELOW RIGHT

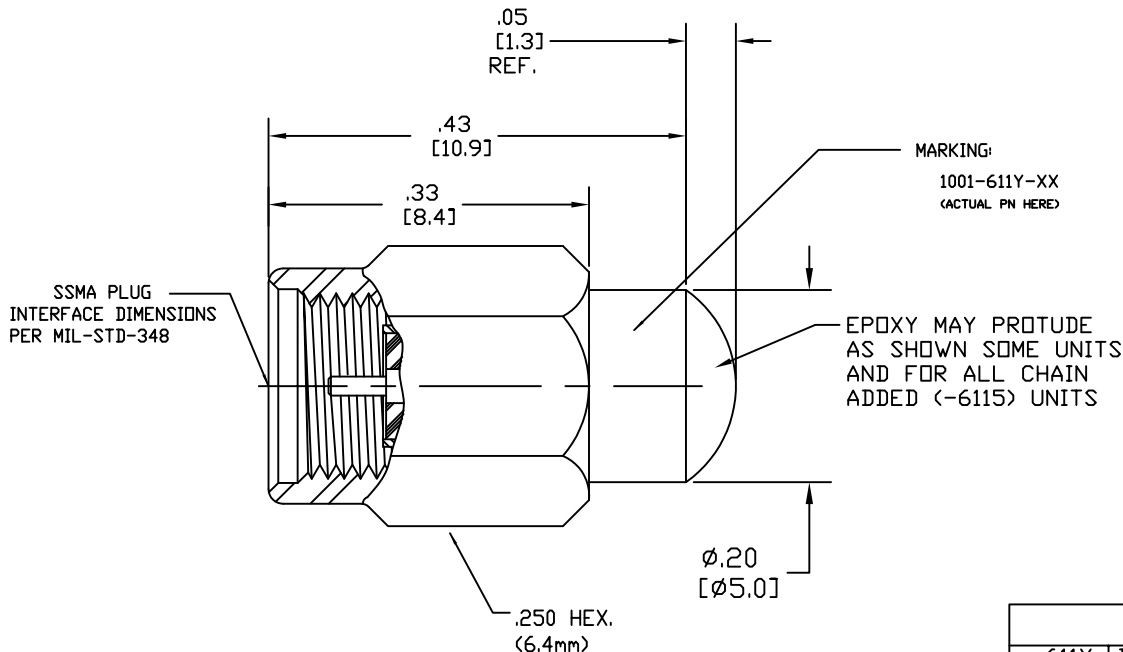


TABLE 1 ELECTRICAL REQUIREMENTS

Part Number	DC-4 GHz	4-12.4 GHz	12.4-18 GHz
-611Y	<1.07 (TYP <1.05)	<1.15	<1.20
-611Z	<1.10	<1.20	<1.30
-6115	SAME AS -6113 BUT BEAD CHAIN WITH EYELET ADDED		

NOTES:

- MATERIAL: INNER CONDUCTOR: BERYLLIUM COPPER PER ASTM B196 & B197. OUTER CONDUCTOR: STEEL, CORROSION RESISTANT PER ASTM A484 & A582, CLASS 303, COND. A. DIELECTRIC: TEFLON PER ASTM D1710.
- FINISH: INNER CONDUCTOR: GOLD PLATED PER MIL-G-45204 & MIL-DTL-39012. HOUSING/COUPLING NUT FINISH FOR DASH/SUFFIX (REPLACING -XX IN PN) -00 OUTER CONDUCTOR: GOLD PLATED PER MIL-G-45204. -02 OUTER CONDUCTOR PASSIVATED SS PER QQ-P-35 OR EQUIV.
- MECHANICAL & ELECTRICAL REQUIREMENTS PER TABLE 1

DRAWING PRACTICES PER ANSI-Y-14.5 MIL-STD-100 & 1000	UNLESS OTHERWISE SPECIFIED TOLERANCES IN:	DRAWN DATE
DIMENSIONS ARE IN INCHES AND APPLY BEFORE/AFTER PROCESSING	DECIMALS INCH DIM	M. TURNER
SURFACE ROUGHNESS .INCHES ✓	.X" .03" [.76]	CHECKED DATE
FINISH	.XX" .010" [.25]	ENGINEER APPR. DATE
SEE NOTES	.XXX" .005 [.127]	
MATERIAL	.XXXX" .0005" [.013]	
SEE NOTES	ANGLES ±0°30'	
	REMOVE ALL BURRS/SHARP W/ BREAK / R OF .003" TO .0005" UNLESS OTHERWISE NOTED DIAS CONCENTRIC <.003 T.I.R.	

THESE DRAWINGS AND SPECIFICATIONS ARE THE PROPERTY OF XMA CORP. OR OMNI SPECTRA AND SHALL NOT BE REPRODUCED, COPIED NOR USED - IN WHOLE OR IN PART - AS A BASIS FOR THE MANUFACTURE OR SALE OF OTHER ITEMS WITHOUT THE EXPRESS WRITTEN PERMISSION OF XMA CORP.
--

**XMA** Powered by:  
**Omni Spectra®**  
 Phone:603-222-2256 Fax:603-222-2259  
 150 Dow Street, Manchester, NH 03101

**SSMA TERMINATION**

SIZE B	CAGE CODE 3HT76	DRAWING NUMBER 1001-611Y-XX
SCALE 8:1	PLATED AREA SQ. IN XXX	SHEET 1 OF 1

BCSI

5

4

3

2

1