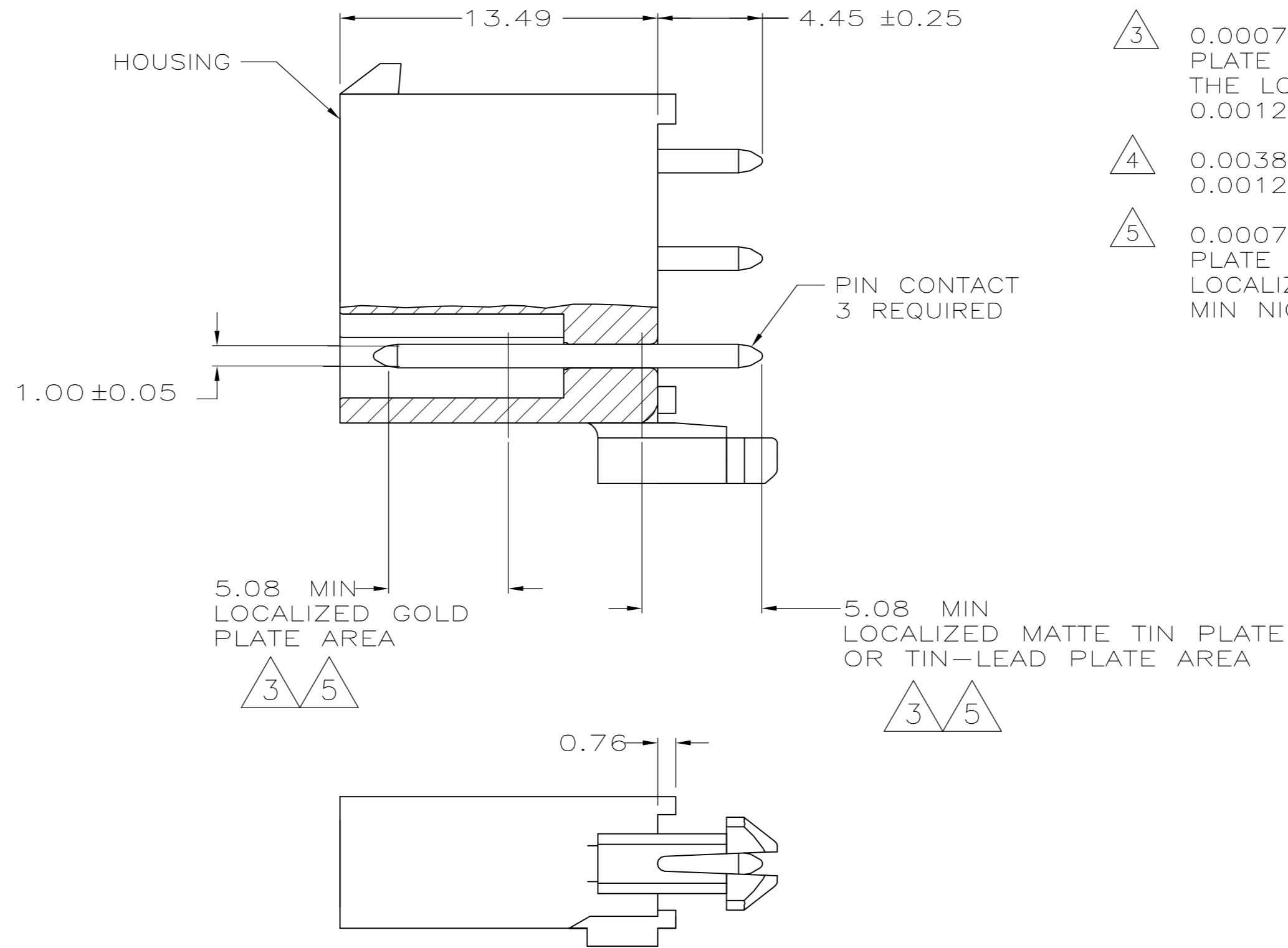
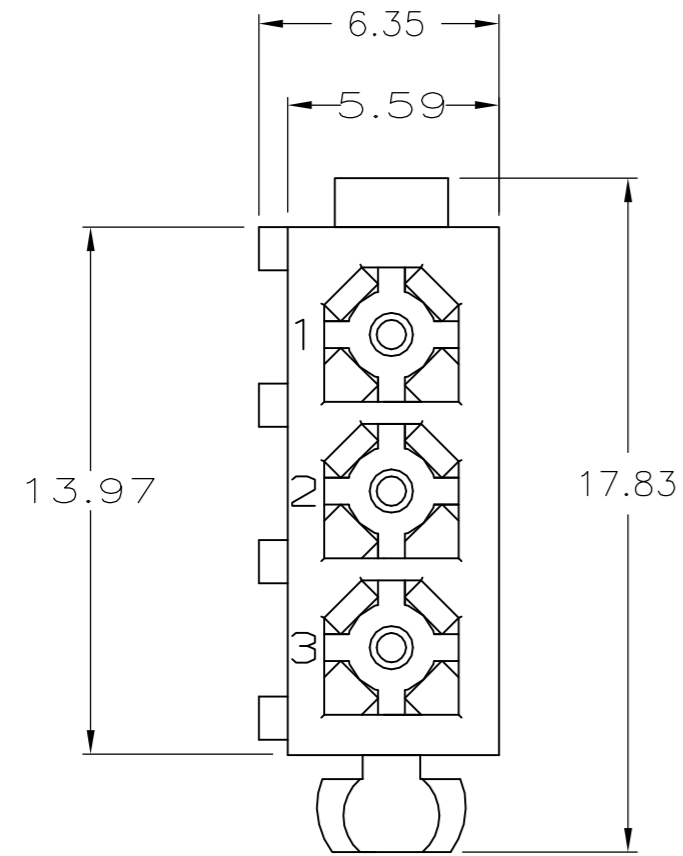
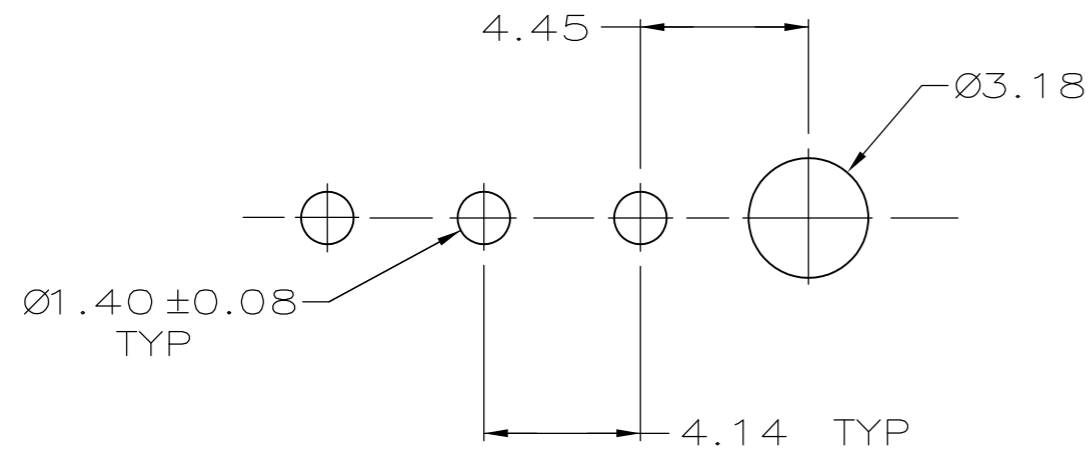


THIS DRAWING IS UNPUBLISHED. RELEASED FOR PUBLICATION
 © COPYRIGHT - By - ALL RIGHTS RESERVED.

LOC		DIST		REVISIONS			
P	LTR	DESCRIPTION		DATE	DWN	APVD	
CM	0	L2	REVISED PER ECO-11-004587	11MAR11	RK	HMR	



- 1 PINS TO COMPLY WITH AMP SOLDERABILITY SPEC. 109-11-3.
- 2 0.00381 MIN MATTE TIN LEAD PLATE OVER 0.00127 MIN NICKEL.
- 3 0.00076 MIN GOLD PLATE IN THE LOCALIZED PLATE AREA, 0.00381 MATTE TIN LEAD IN THE LOCALIZED PLATE AREA, BOTH OVER 0.00127 MIN NICKEL.
- 4 0.00381 MIN MATTE TIN PLATE OVER 0.00127 MIN NICKEL.
- 5 0.00076 MIN GOLD PLATE IN THE LOCALIZED PLATE AREA, 0.00381 MATTE TIN IN THE LOCALIZED PLATE AREA, BOTH OVER 0.00127 MIN NICKEL.



RECOMMENDED LAYOUT FOR 1.57 THICK BOARD
 TOLERANCES NON-ACCUMULATIVE

BRASS, TIN	4	NYLON, UL94V-0	BLACK	5-770170-0
BRASS, GOLD	5	NYLON, UL94V-0	WHITE	1-770170-1
BRASS, TIN	4	NYLON, UL94V-0	WHITE	1-770170-0
BRASS, GOLD	3	NYLON, UL94V-0	WHITE	770170-2
BRASS, TIN-LEAD	2	NYLON, UL94V-0	WHITE	770170-1
MATERIAL	FINISH	MATERIAL	COLOR	PART NO.

THIS DRAWING IS A CONTROLLED DOCUMENT.		DWN		08JUN05		TE Connectivity	
DIMENSIONS: mm		S CARPENTER		28JUL2003		NAME	
TOLERANCES UNLESS OTHERWISE SPECIFIED:		R JONES		28JUL2003		HEATER ASSEMBLY, 3 CKT, MINI UNIVERSAL MATE-N-LOK	
0 PLC ± -		APVD		R JONES		SIZE	
1 PLC ± -		PRODUCT SPEC		R JONES		CAGE CODE	
2 PLC ± 0.13		APPLICATION SPEC		-		DRAWING NO	
3 PLC ± -		WEIGHT		-		A2 00779	
4 PLC ± -		CUSTOMER DRAWING		SCALE		1:1	
ANGLES ± -		SHEET		1 OF 1		REV	
FINISH		-		L2		-	